

Driver Installation for Windows 2000/XP

Driver Installation Guide Format

New Driver Installation for Windows 2000/XP: Use these instructions if you have just installed an Adaptec USB 2.0 card into your system. Remember that the first time you start your system after installing a card, it may take longer due to the fact that the operating system is locating and installing drivers for the card.

Verifying Driver Installation for Windows 2000/XP: Use these instructions to verify successful driver installation on your system.

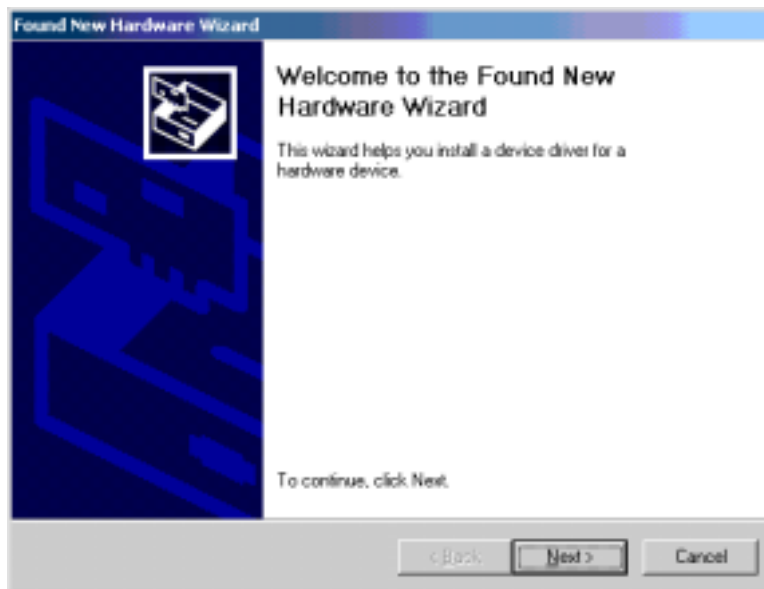
New Driver Installation for Windows 2000/XP

Note: You must be logged on as Administrator or have administrator privileges to install the USB 2.0 device adapter on Windows 2000/XP.

During the operating system startup, the controller will be detected and Windows will load embedded USB 1.1 and IEEE 1394 drivers.

Note: It may take longer than usual for your system to start because the operating system is locating the new drivers

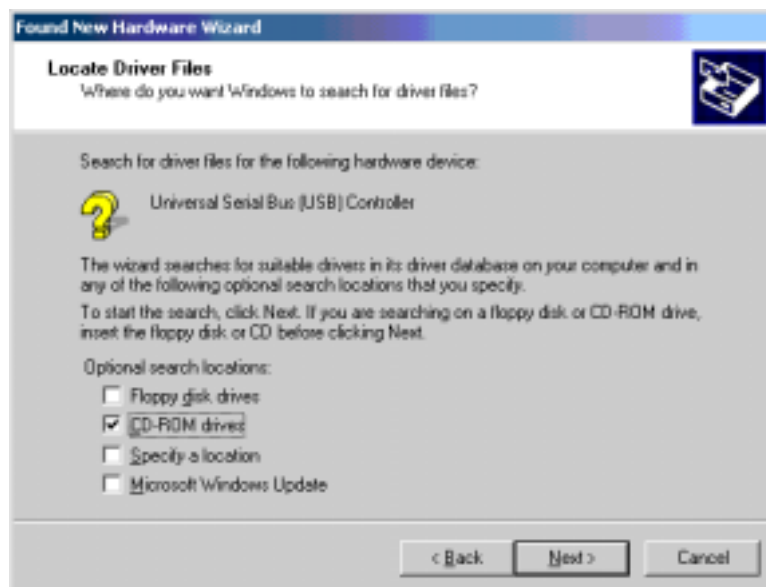
- 1 When the Found New Hardware Wizard appears, click **Next**.



- 2 When the Install Hardware Device Drivers window appears, select **search for a suitable driver for my device (Recommended)** and click **Next**.



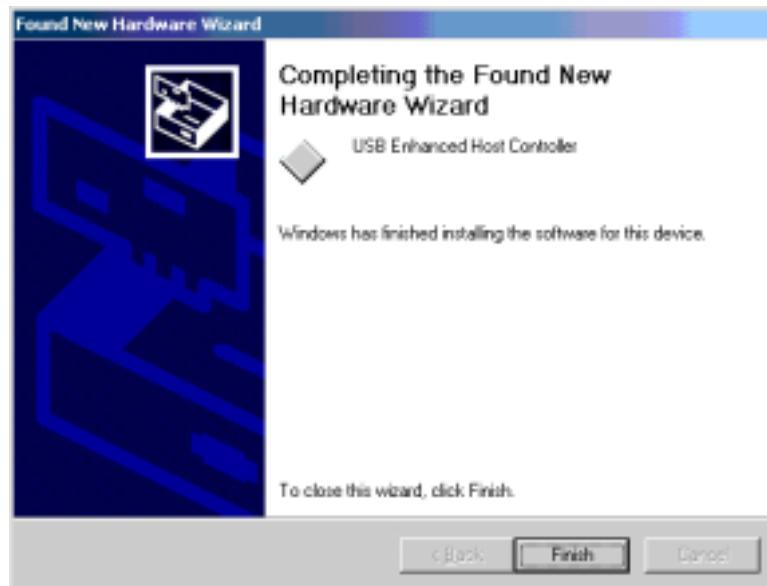
- 3 The Locate Driver Files window will appear, uncheck all options except **CD-ROM drives**, (if the CD is not inserted; please insert the CD), and click **Next**.



- 4 Windows will report that it has found a driver for a Universal Serial Bus (USB) Controller. Click **Next** to continue.



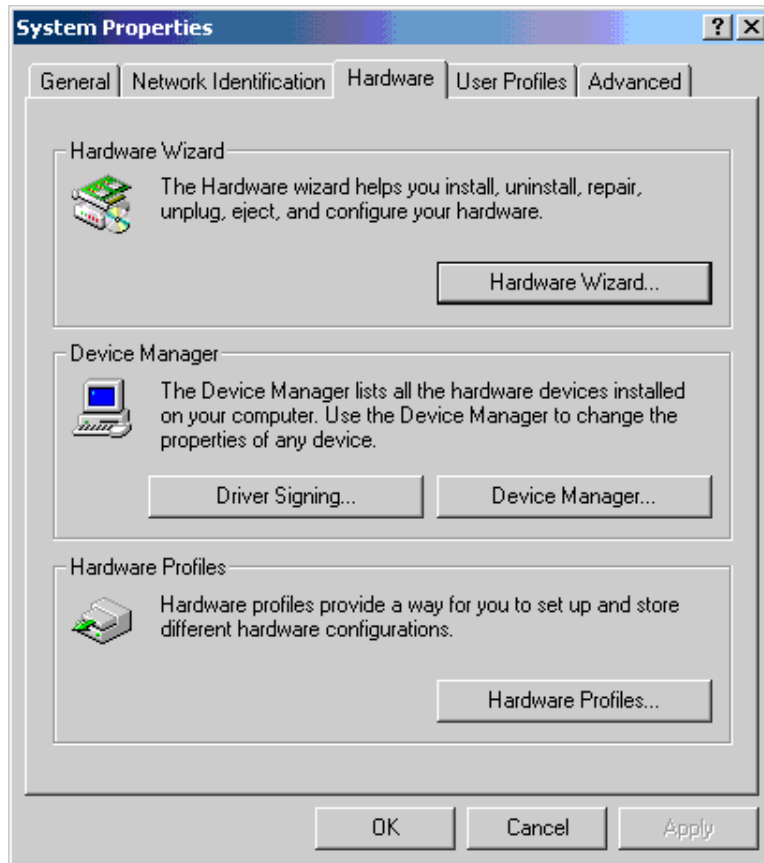
- 5 When Windows is finished copying drivers, click **Finish**.



Verifying Driver Installation for Windows 2000/XP

Use these instructions to verify successful driver installation on your system.

- 1 To verify that the driver is installed; right-click on the **My Computer** desktop icon, select **Properties**, click the **Hardware** tab, and then click **Device Manager**.



- 2 Then click on the “+” (plus) sign next to **Universal Serial Bus controllers** to expand the list.

